

HONEY BEE AUTOMATIX SOFTWARE INSTALLATION FOR AirFLEX [2018]

A WINDOWS COMPUTER WITH A USB PORT WILL BE REQUIRED

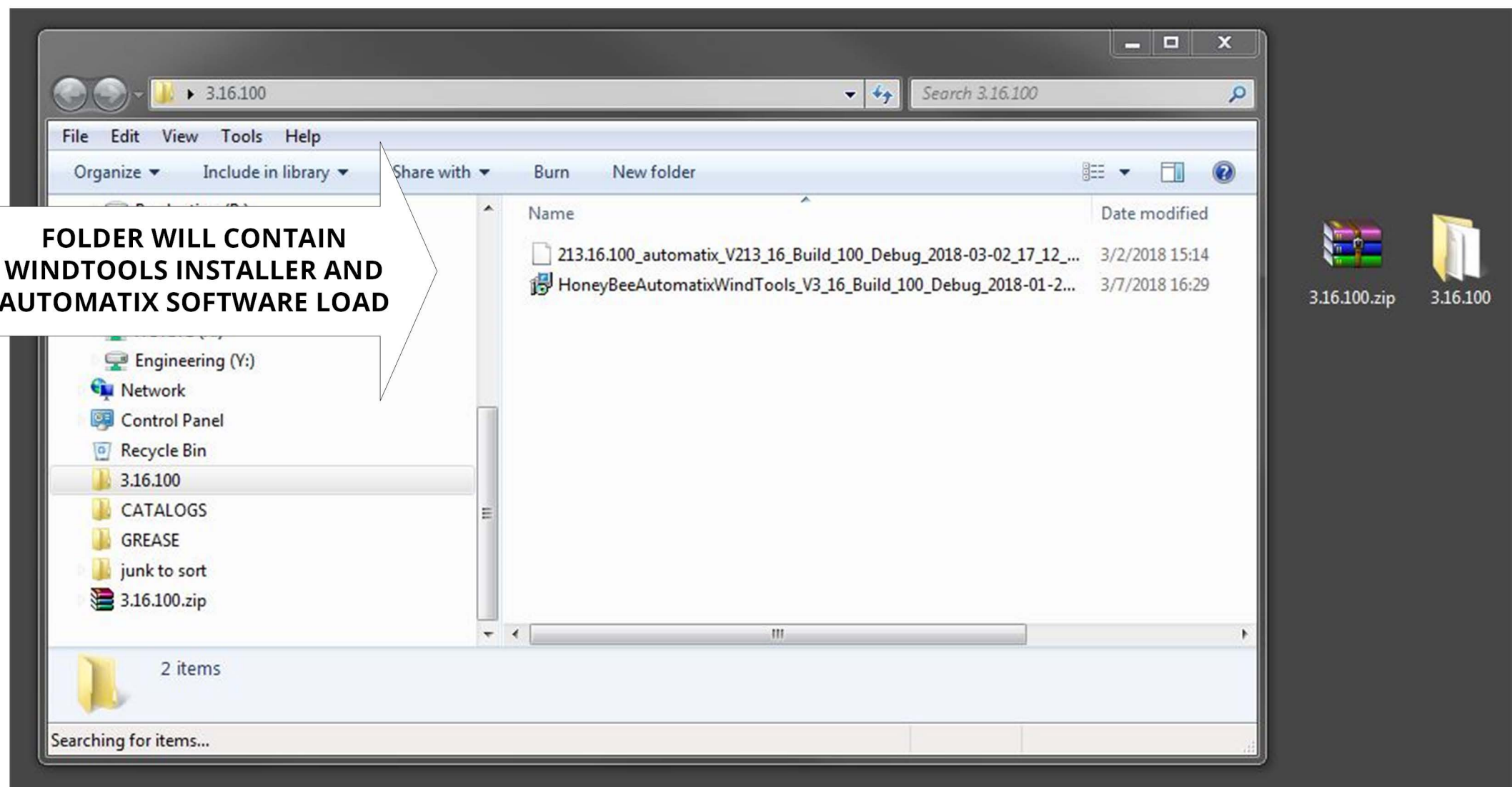
DOWNLOAD/SAVE THE SOFTWARE ZIP FILE TO YOUR DESKTOP SO IT IS EASY TO FIND FOR NEXT STEPS.

ZIP FILE WILL BE NAMED WITH SOFTWARE VERSION

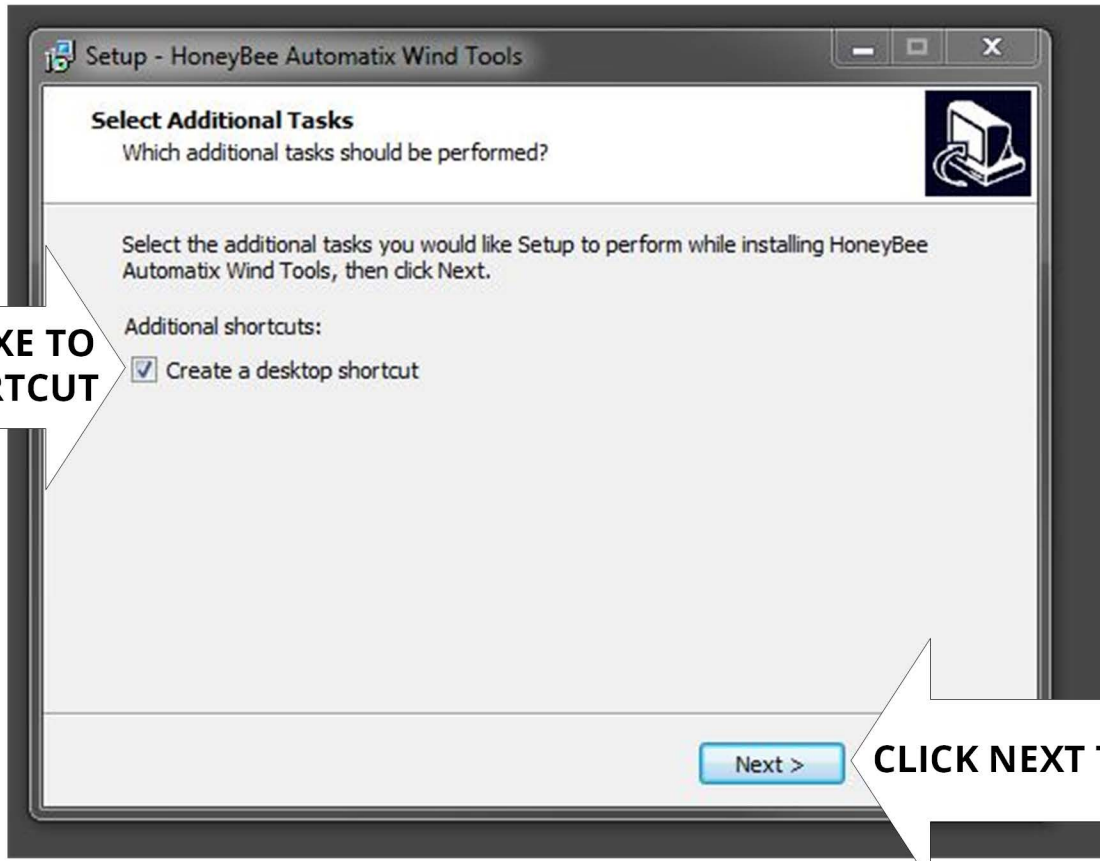
DO NOT ATTEMPT TO INSTALL SOFTWARE FROM INSIDE ZIP

EXTRACTED ZIP WILL BE A FOLDER OF THE SAME NAME

INSTALLED "WINDTOOLS" WILL CREATE DESKTOP SHORTCUT

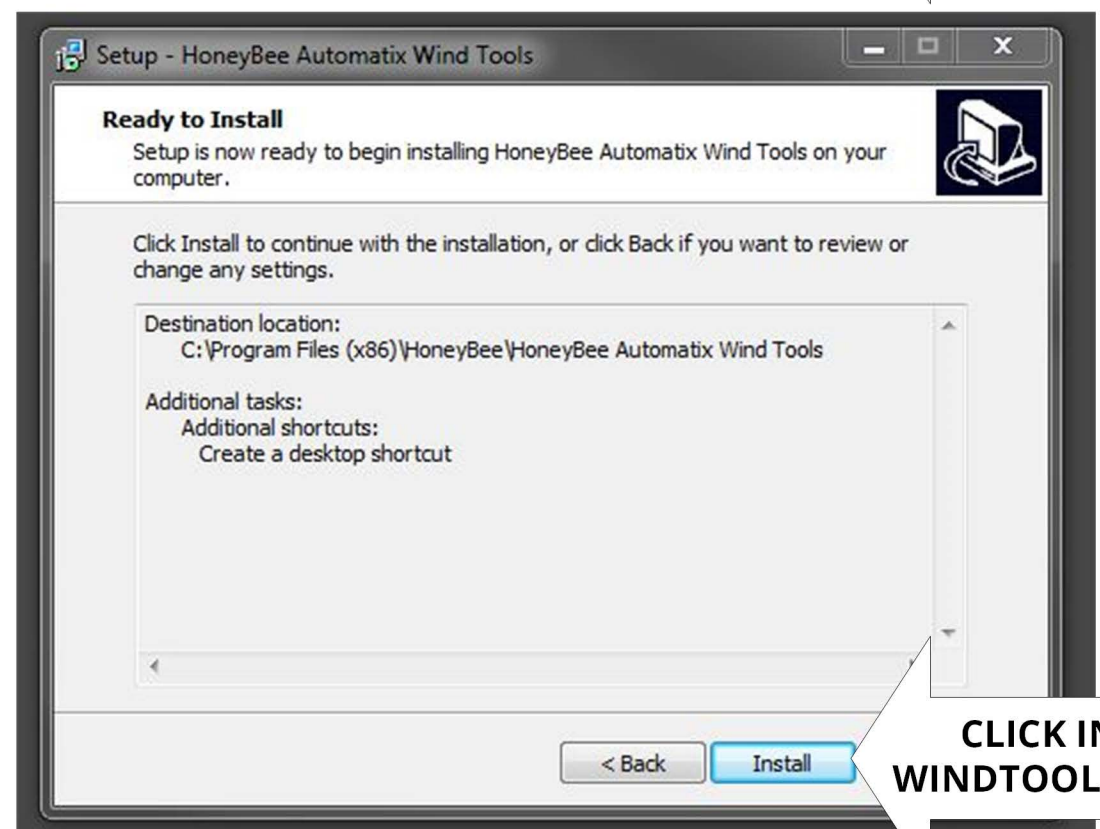


FOLDER WILL CONTAIN WINDTOOLS INSTALLER AND AUTOMATIX SOFTWARE LOAD

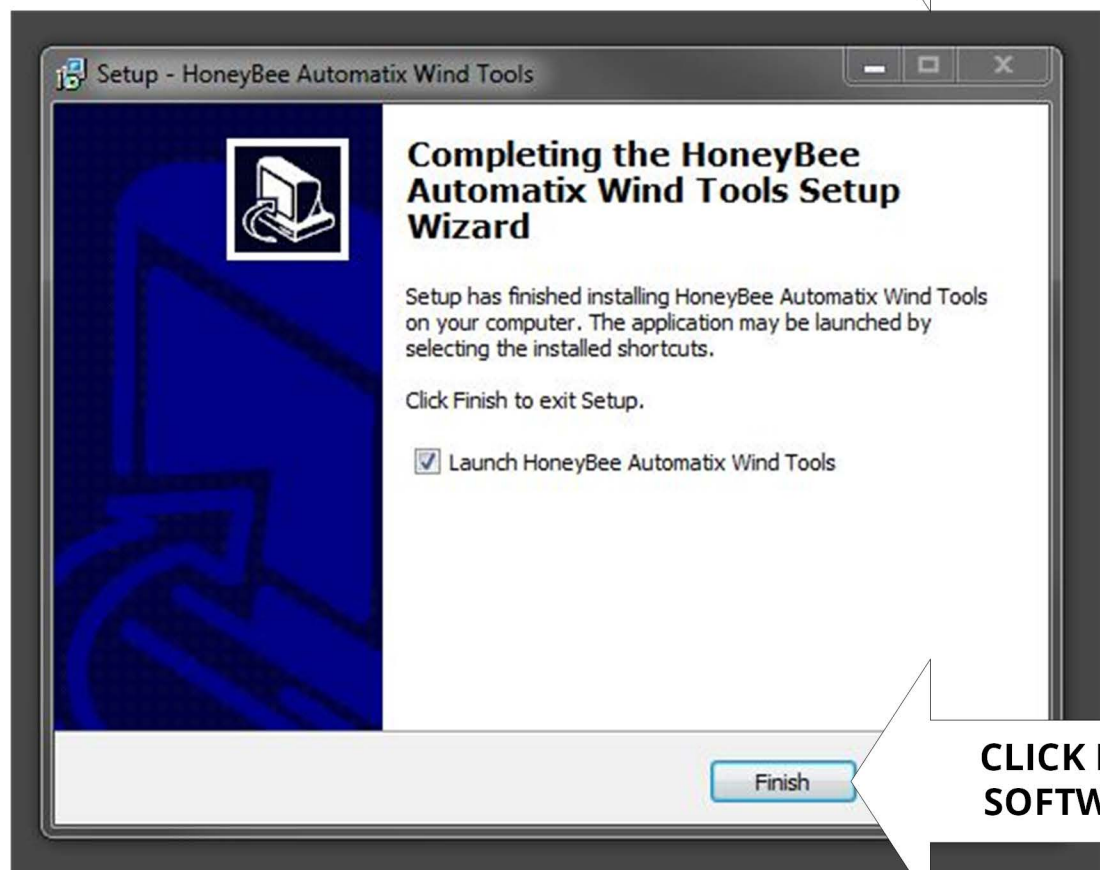


DOUBLE CLICK WINDTOOLS EXE TO INSTALL. CHECK CREATE SHORTCUT

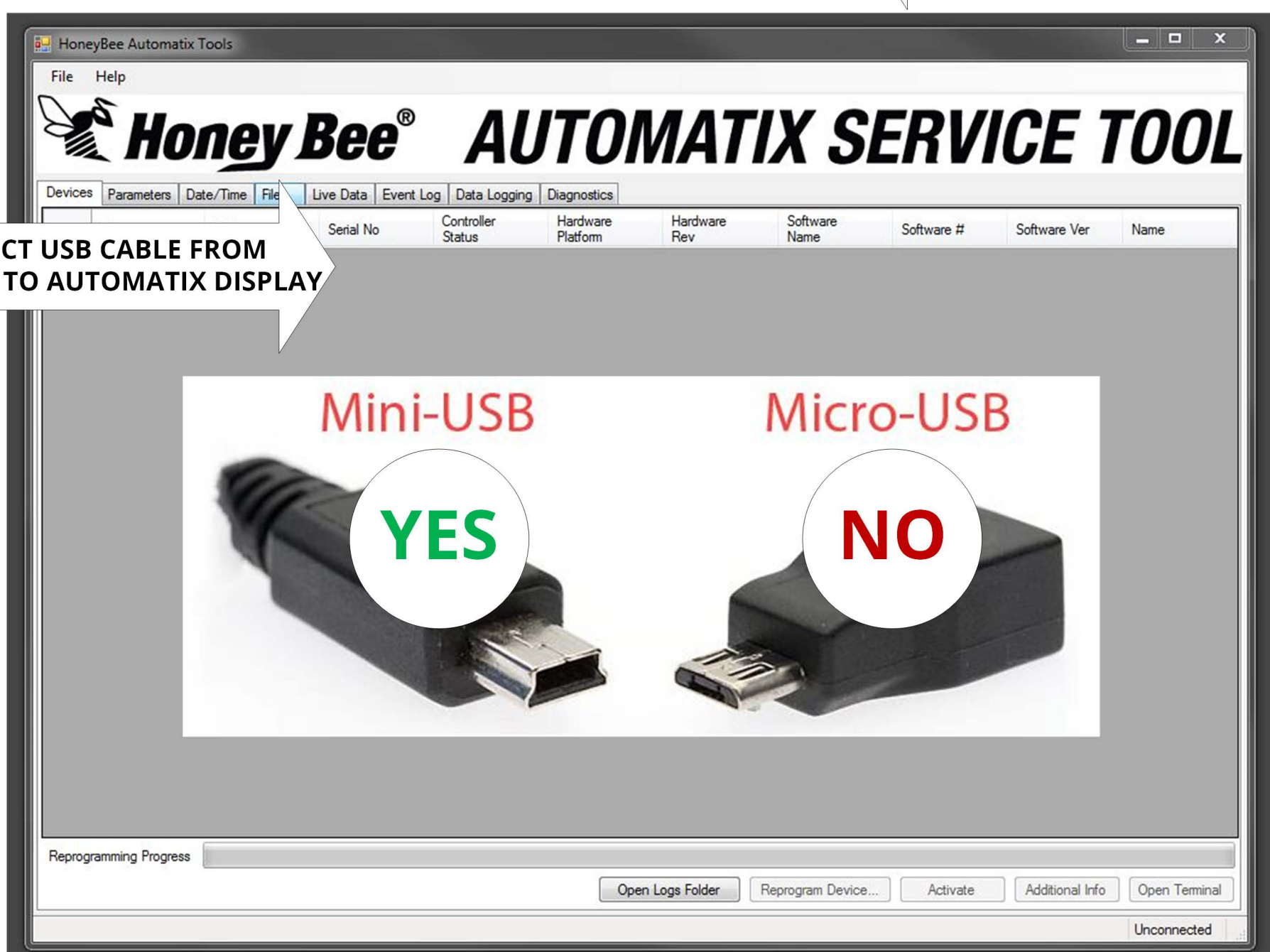
CLICK NEXT TO PROCEED TO NEXT STEP



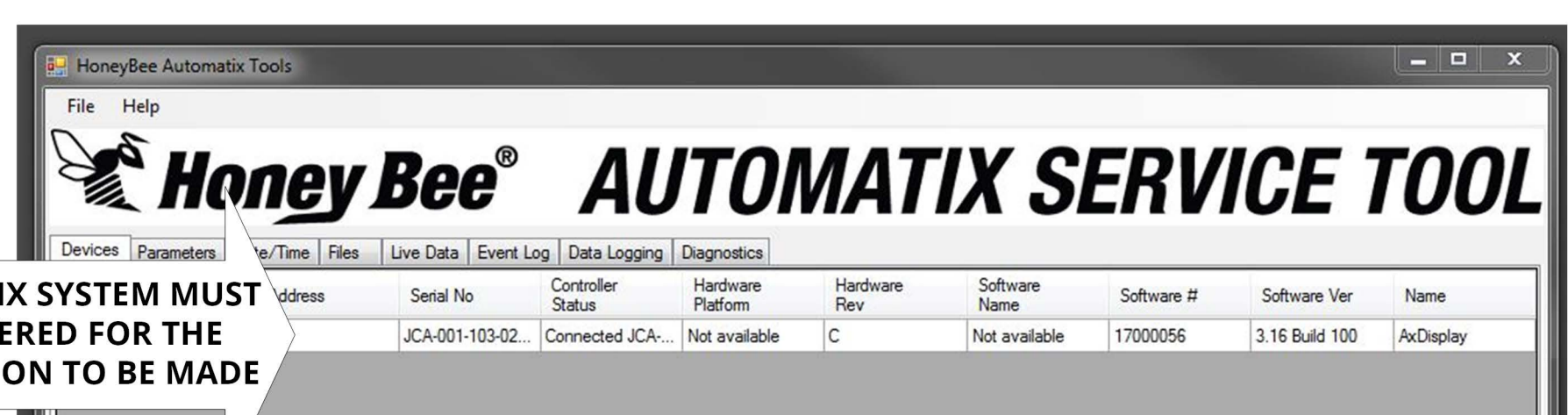
CLICK INSTALL TO SET UP THE WINDTOOLS SOFTWARE ON YOUR PC



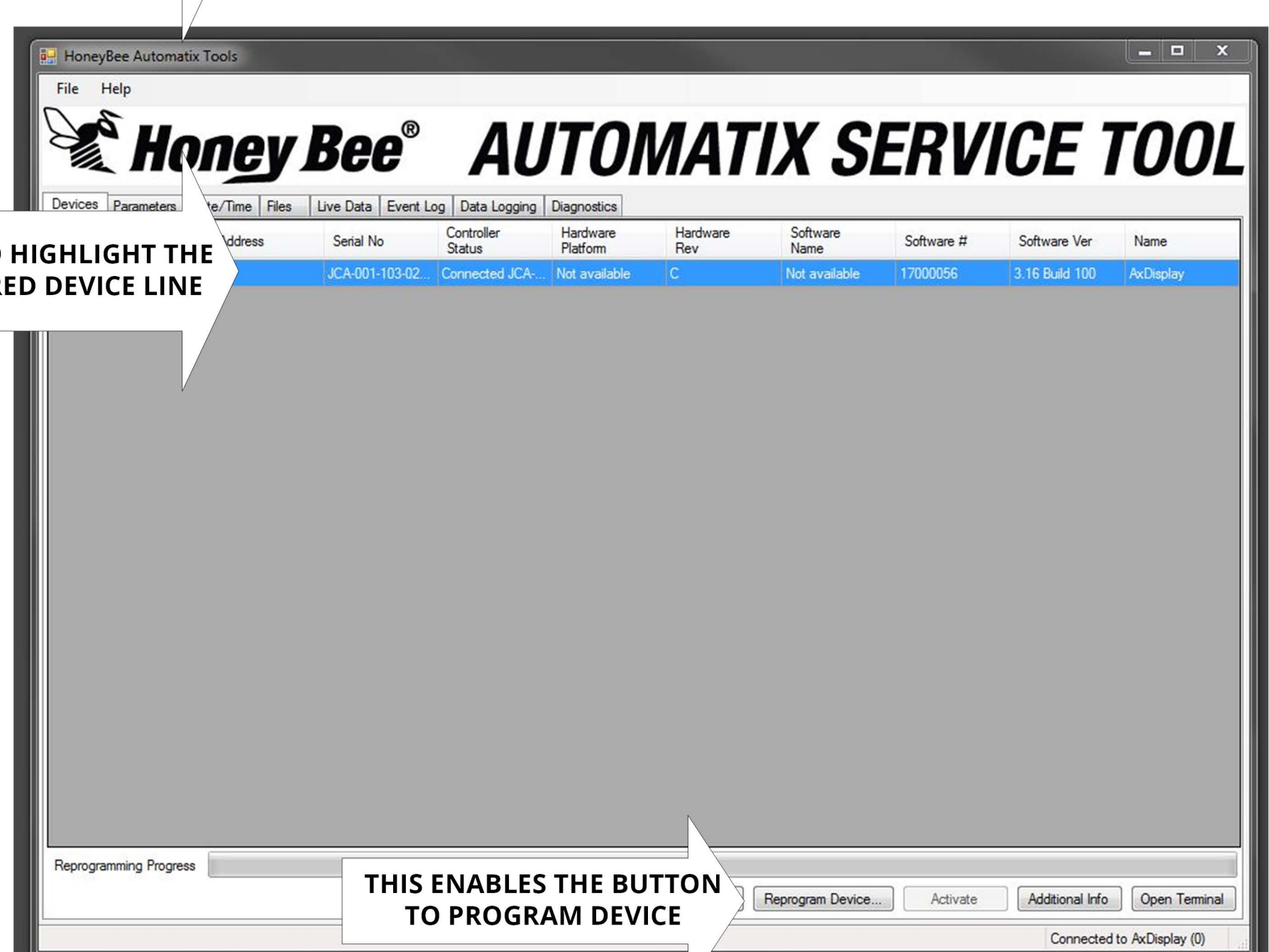
CLICK FINISH TO START THE SOFTWARE UPGRADE TOOL



CONNECT USB CABLE FROM COMPUTER TO AUTOMATIX DISPLAY

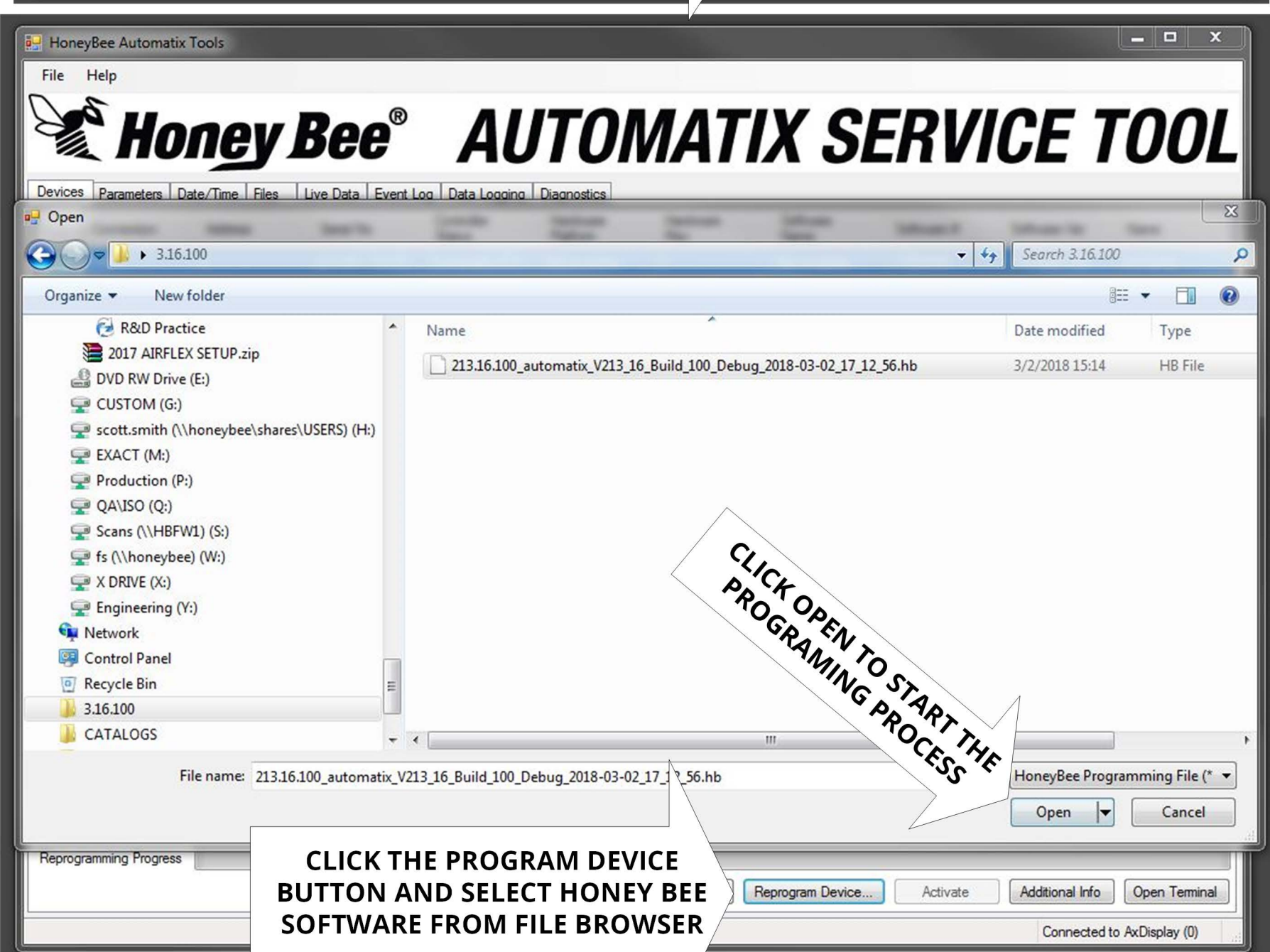


AUTOMATIX SYSTEM MUST BE POWERED FOR THE CONNECTION TO BE MADE



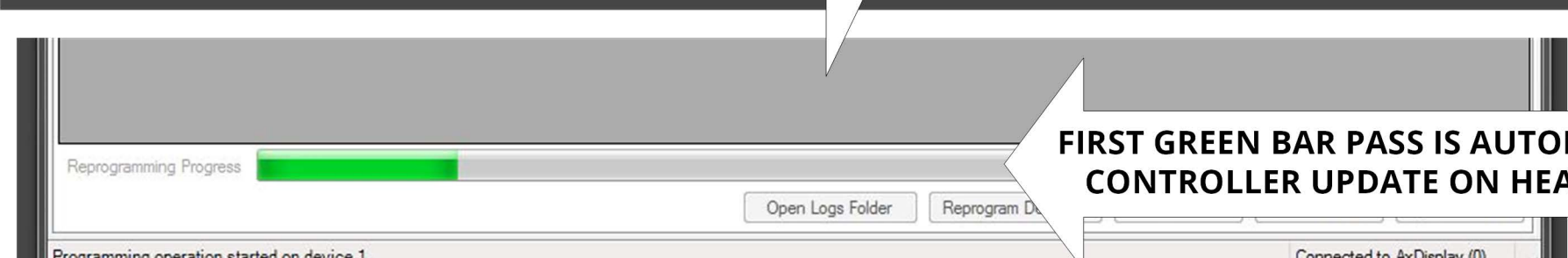
CLICK AND HIGHLIGHT THE DISCOVERED DEVICE LINE

THIS ENABLES THE BUTTON TO PROGRAM DEVICE

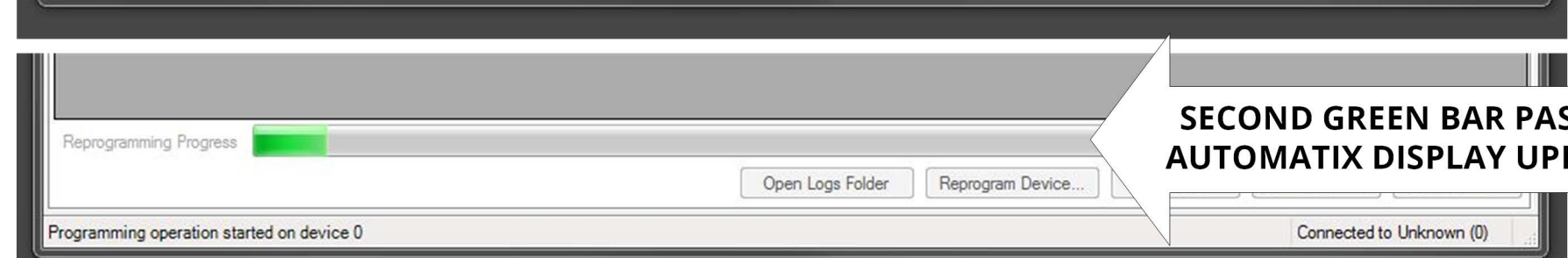


CLICK THE PROGRAM DEVICE BUTTON AND SELECT HONEY BEE SOFTWARE FROM FILE BROWSER

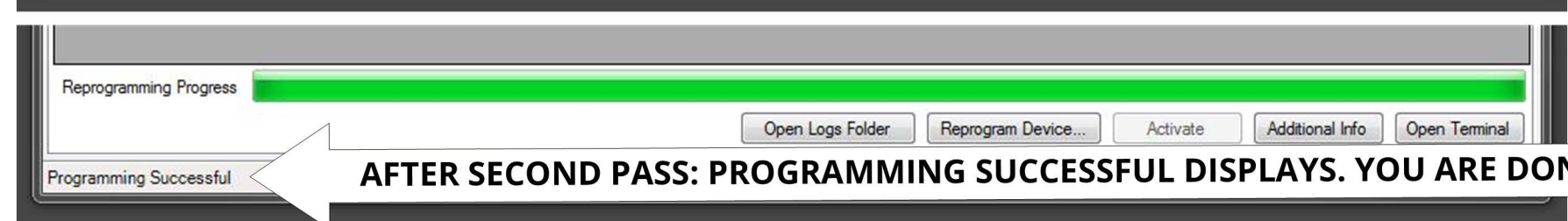
CLICK OPEN TO START THE PROGRAMING PROCESS



FIRST GREEN BAR PASS IS AUTOMATIX CONTROLLER UPDATE ON HEADER



SECOND GREEN BAR PASS IS AUTOMATIX DISPLAY UPDATE



AFTER SECOND PASS: PROGRAMMING SUCCESSFUL DISPLAYS. YOU ARE DONE!